

# Trenching and backfilling

## ► Trenching and backfilling services for subsea cables, pipelines and marine outfalls.

Peter Madsen Marine Contractors have been involved in trenching and backfilling as well as nearshore cable, pipeline and marine outfall installation for decades.

Our vessels equipped with hydraulic backhoe excavators are suitable for trenching of soft and hard seabeds in water depths of up to approx. -11 meters. They are therefore particularly useful for nearshore, shallow or tidal locations, such as cable landfalls and marine outfalls.

In addition to this, some of our vessels are equipped with wire excavators and grabs, which can be used for ancillary services including assistance with the actual placement of cables, pipes or ballast.

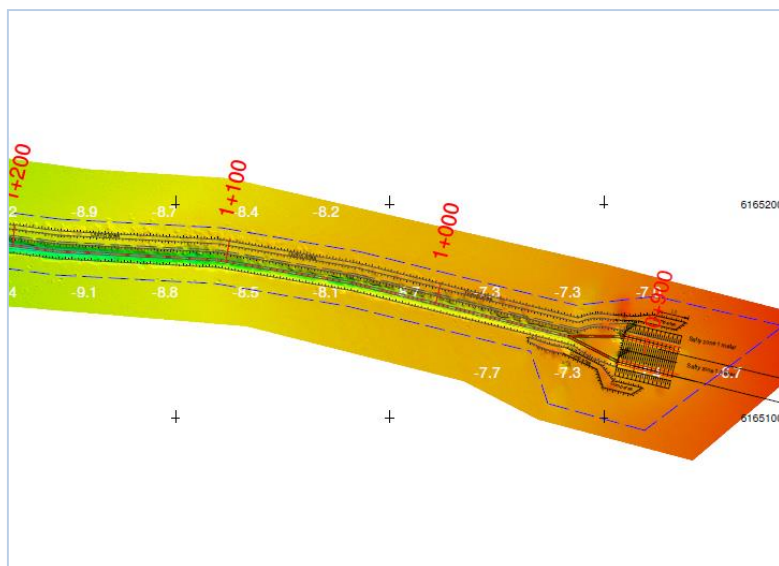
Our vessels are all self-propelled and fitted with spud legs for stable operations. The PDS2000 guidance system enables us to work accurately with validation by our own multibeam survey package, including in-house equipment, surveyors and processing.



- Fleet of backhoe vessels suitable for trenching
- Nearshore, shallow or tidal locations
- Soft and hard materials, including clay and chalk
- Vessels self-propelled and fitted with spud legs
- Experience from cable, pipeline and outfall projects
- Wire excavator vessels for backfilling and ancillary work
- Full multibeam survey and video package

## Key projects:

- Baltic Connector (EST)  
Backfilling in narrow trench - pipeline
- NordBalt Interconnector (LT)  
Nearshore trenching and backfilling
- Mariager Fjord (DK)  
Trenching, installation, backfilling - pipeline
- Frederiksværk (DK)  
Trenching, installation, backfilling - cable
- Kontek Interconnector (DK)  
Trenching and backfilling
- Sprogø OWF (DK)  
Trenching, installation, backfilling – array cable
- Rødsand 2 OWF (DK)  
Trenching, backfilling – array/export cables



Get in touch:

Tel: +45 8629 0100  
info@peter-madsen.dk  
www.peter-madsen.dk



**Peter Madsen**  
Marine Contractors